



# ELECTRONIC MOUSE VALVE SERIES

## Clippard Mouse Series Electronic Valves

- Functional Simplicity—One Moving Part!
- 1,000,000,000+ Cycle Life
- Fast Response
- Low Heat Rise
- Quiet Operation
- Industry Standard for Leak-Free Operation
- Low Power



### EV Series Mouse Valves

2- and 3-way manifold and in-line mounting. Normally-Closed and fully-ported versions.

See Pages 172 - 176



### Proportional Mouse Valves

Proportional control provides variable output flow. 2-way only.

See Pages 184 - 187



### “Oxygen Clean” EV Series Mouse Valves

Specially-cleaned valves for analytical or Oxygen use.

See Pages 177 - 172, 174 - 176



### ECN, EVN, ETN Mouse Valves

Normally-Open, manifold mount to allow Normally-Closed and Normally-Open valves on the same manifold.

See Page 177



### Corrosion-Resistant Series Mouse Valves

Enhanced plating and some stainless steel components add to the life of this valve used with mildly corrosive media, such as moisture in air or gases.

See Pages 171 - 172, 174 - 176



### Intrinsically Safe Mouse Valves

Low power and suited for Intrinsically Safe barriers.

See Pages 173, 178



### EM Series Mouse Valves

The smallest valve in this series, for applications requiring high-density valve population.

See Page 179



### ES Series Mouse Valves

Alternate mounting with same compact design and reliability.

See Pages 199 - 204

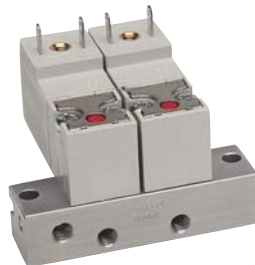
## Poppet & Spool Valves



### 10 mm Valves

High quality and interchangeable 2- and 3-way solenoid valves. Clippard's smallest electronic valve series.

See Pages 205 - 210



### 15 mm Valves

Higher flow and manifold mount. Variety of electrical connections and AC/DC power.

See Pages 211 - 216



### Maximatic® Direct-Acting Valves

Single-solenoid, spring-return poppet valves. 2- and 3-way models up to 1/4" NPT.

See Page 192



### Maximatic® 3-Way & 4-Way Valves

Available in a variety of sizes and voltages in stock for immediate delivery.

See Pages 193 - 198